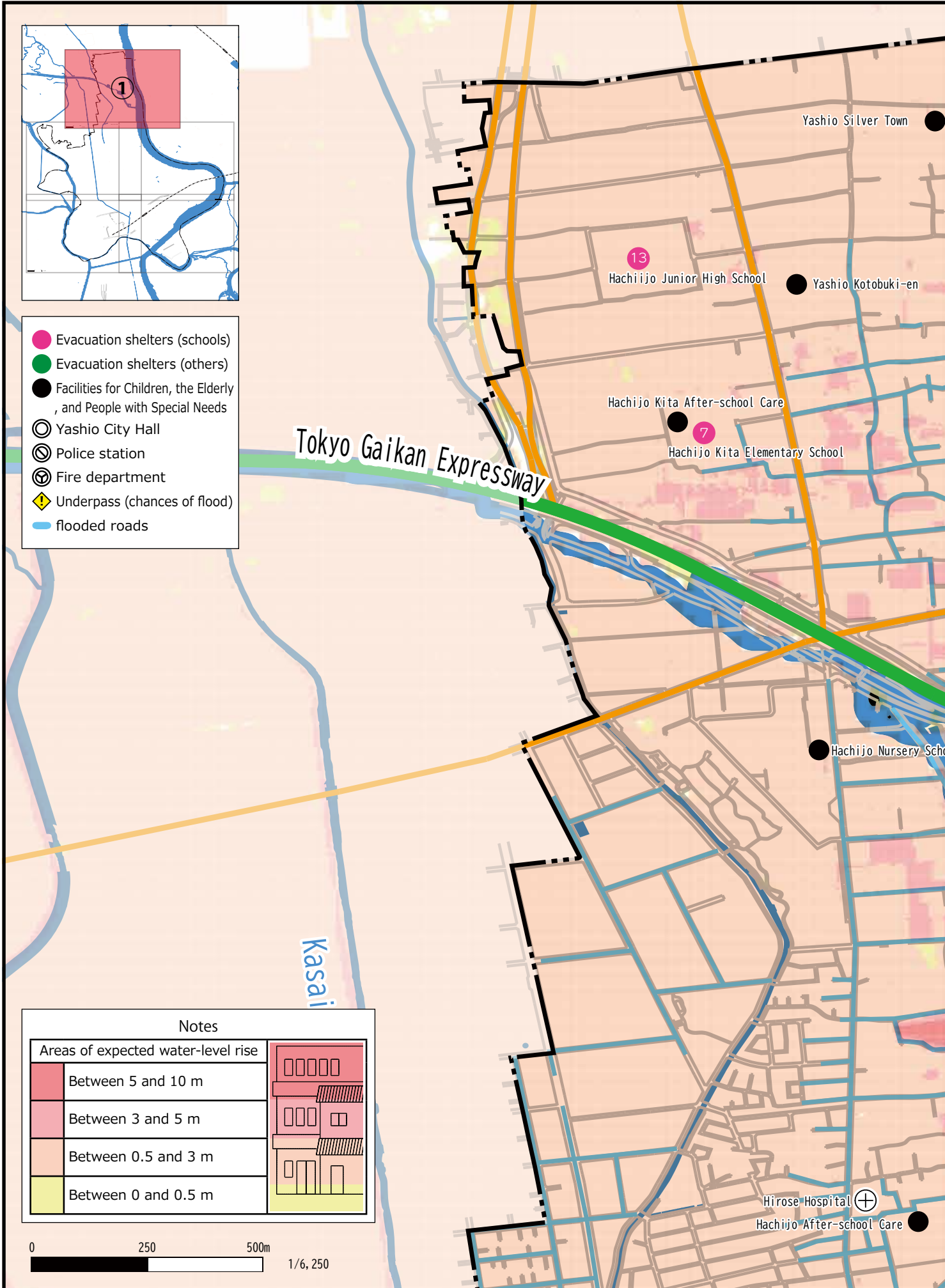
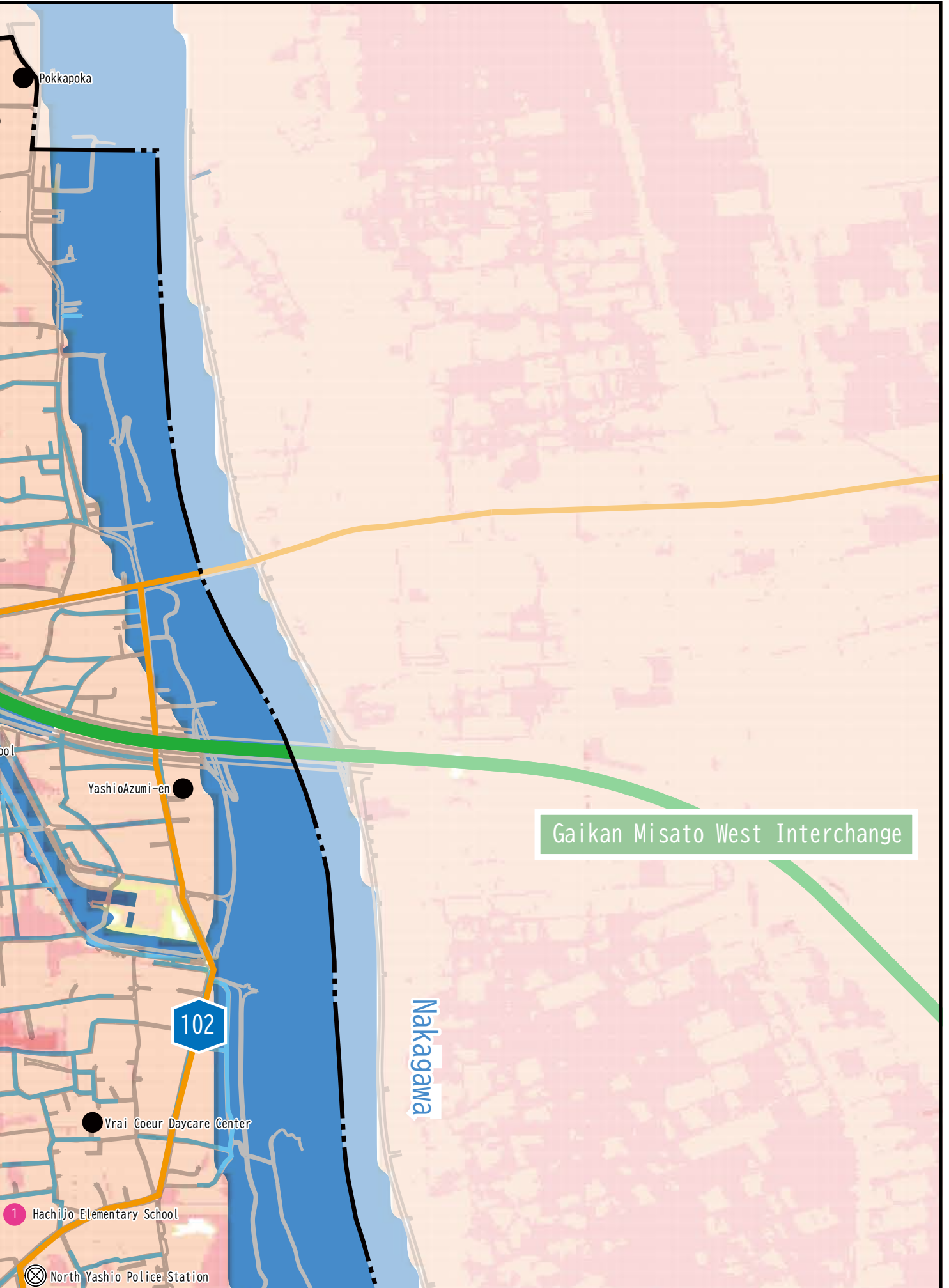


# Detailed Flood Hazards Map(Tonegawa)

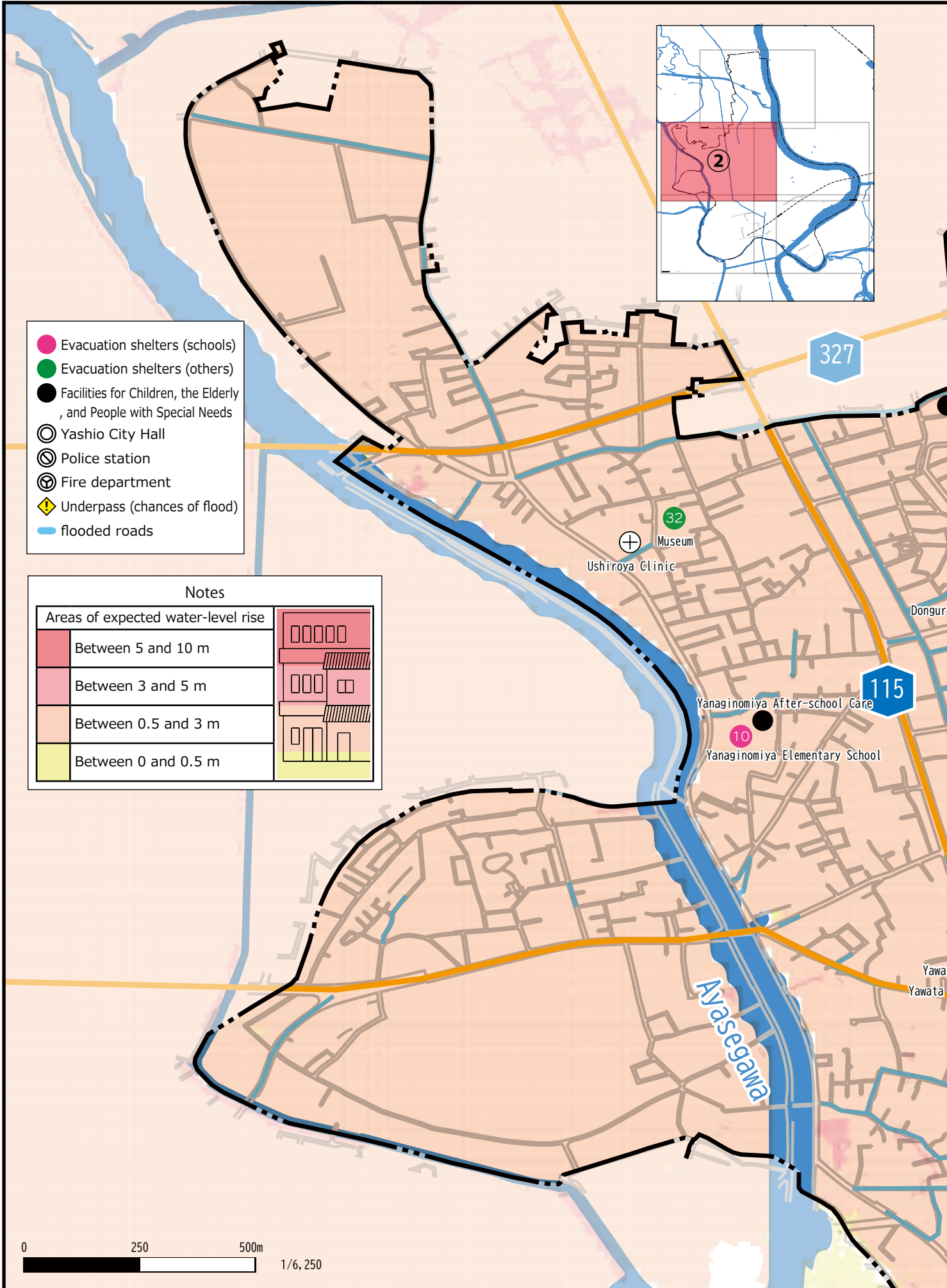


- Evacuation shelters (schools)
- Evacuation shelters (others)
- Facilities for Children, the Elderly, and People with Special Needs
- Yashio City Hall
- Ⓜ Police station
- Ⓜ Fire department
- ◆ Underpass (chances of flood)
- flooded roads

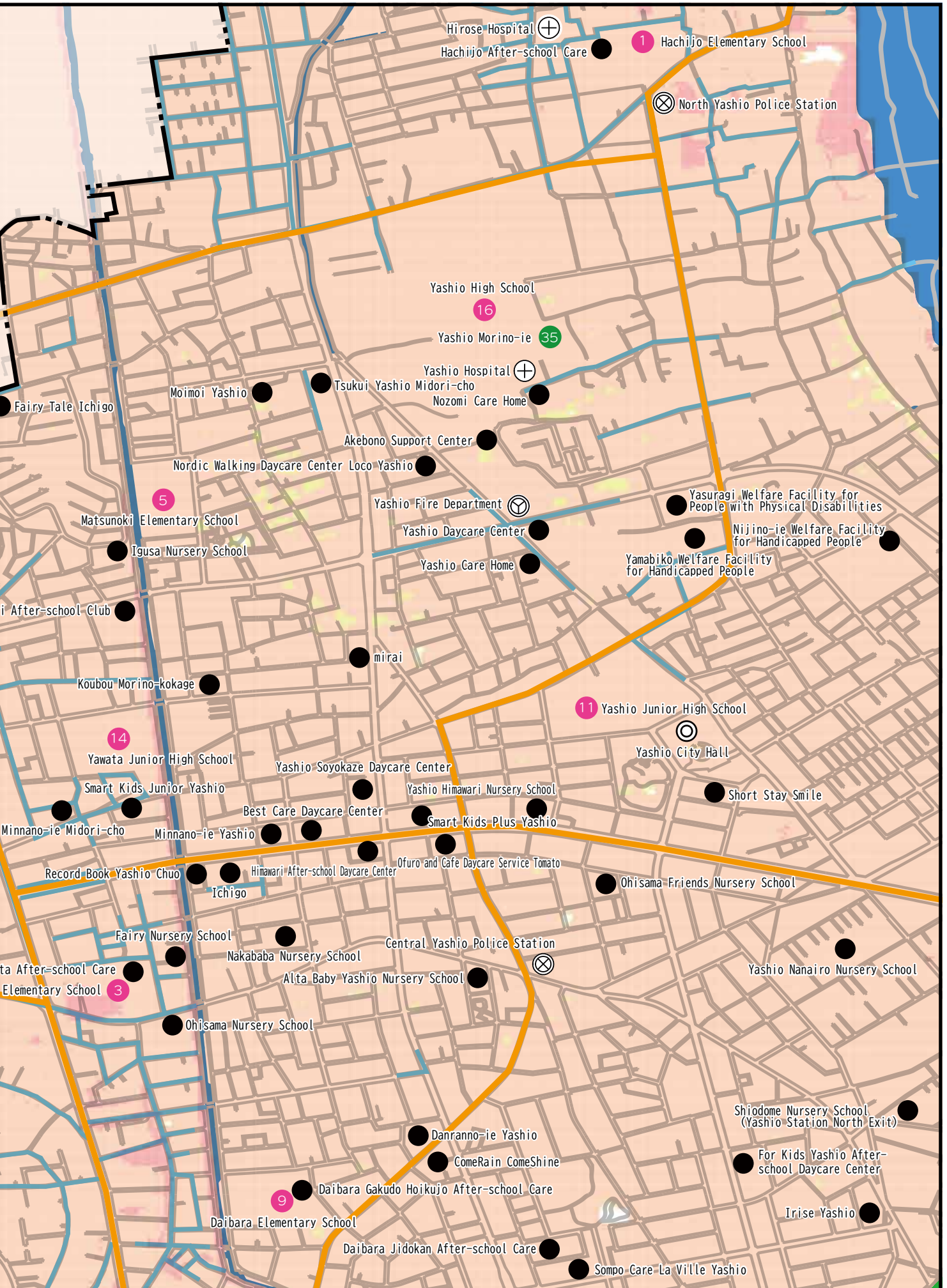
Notes	
Areas of expected water-level rise	
Between 5 and 10 m	
Between 3 and 5 m	
Between 0.5 and 3 m	
Between 0 and 0.5 m	



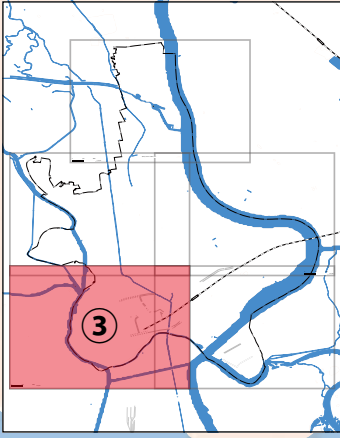
# Detailed Flood Hazards Map(Tonegawa)







# Detailed Flood Hazards Map(Tonegawa)

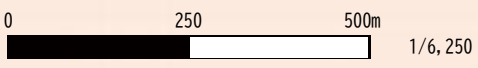


- Evacuation shelters (schools)
- Evacuation shelters (others)
- Facilities for Children, the Elderly, and People with Special Needs
- Yashio City Hall
- ⊙ Police station
- ⊚ Fire department
- ◆ Underpass (chances of flood)
- flooded roads

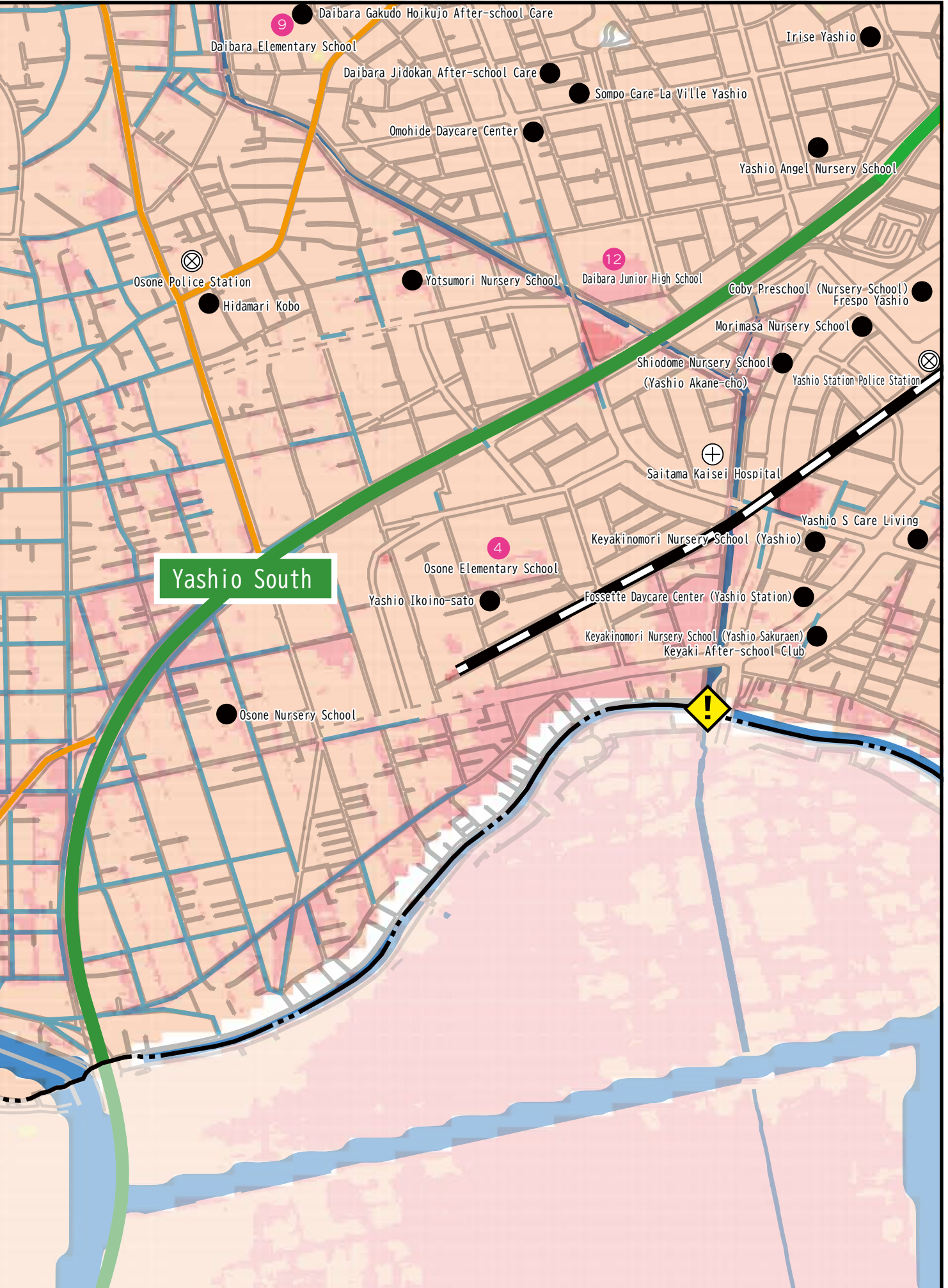
Life Base Yashio

Yashio Aino-ie Care Home

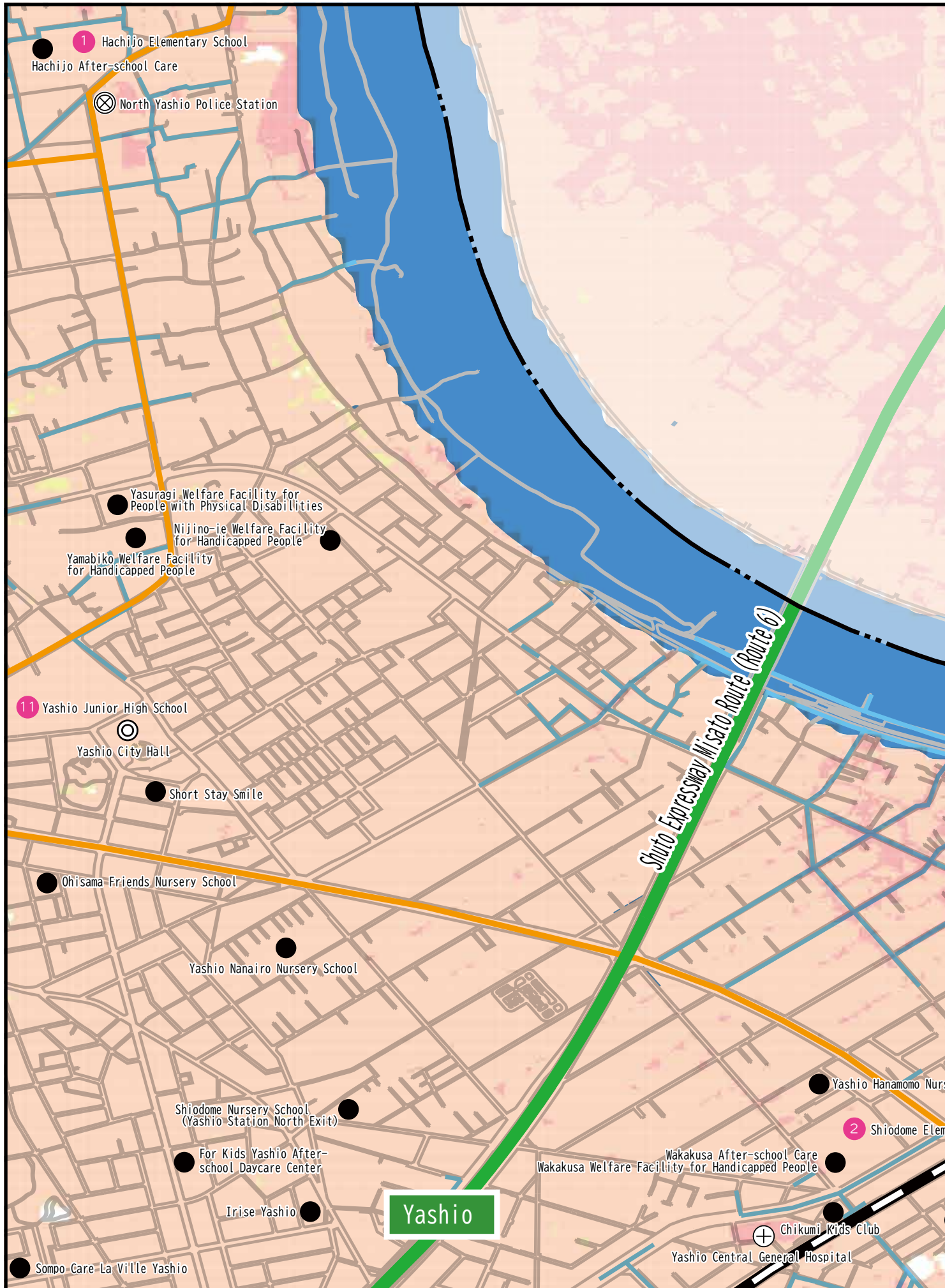
Notes	
Areas of expected water-level rise	
Between 5 and 10 m	
Between 3 and 5 m	
Between 0.5 and 3 m	
Between 0 and 0.5 m	









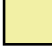
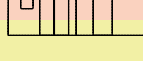


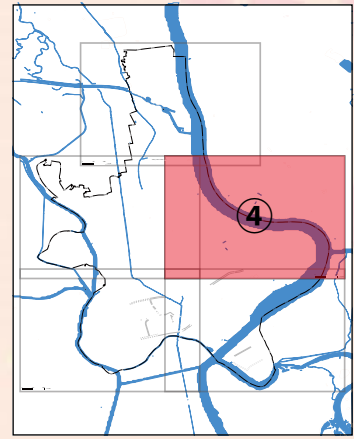










# Detailed Flood Hazards Map(Tonegawa)

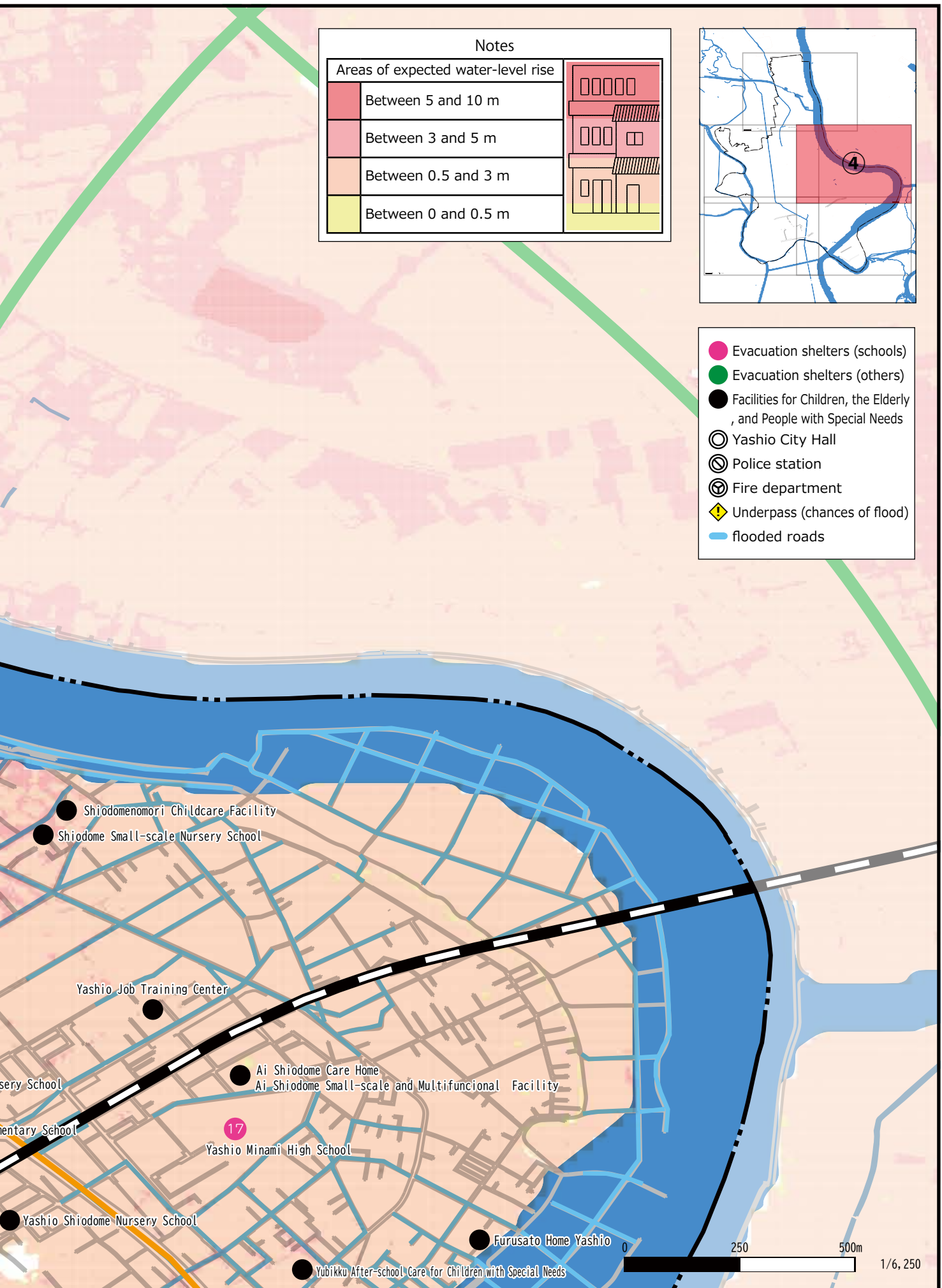




Notes	
Areas of expected water-level rise	
 Between 5 and 10 m	
 Between 3 and 5 m	
 Between 0.5 and 3 m	
 Between 0 and 0.5 m	

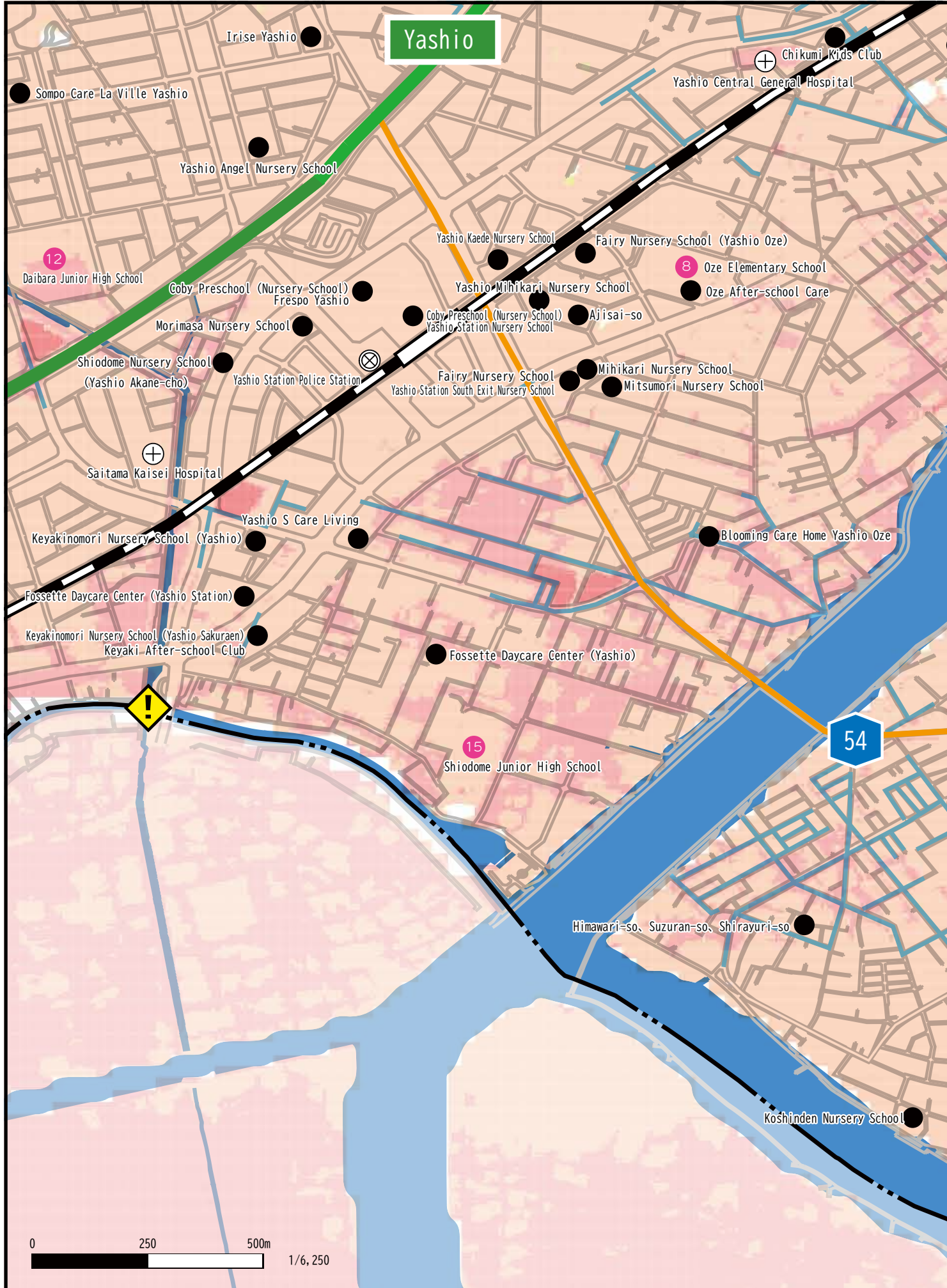


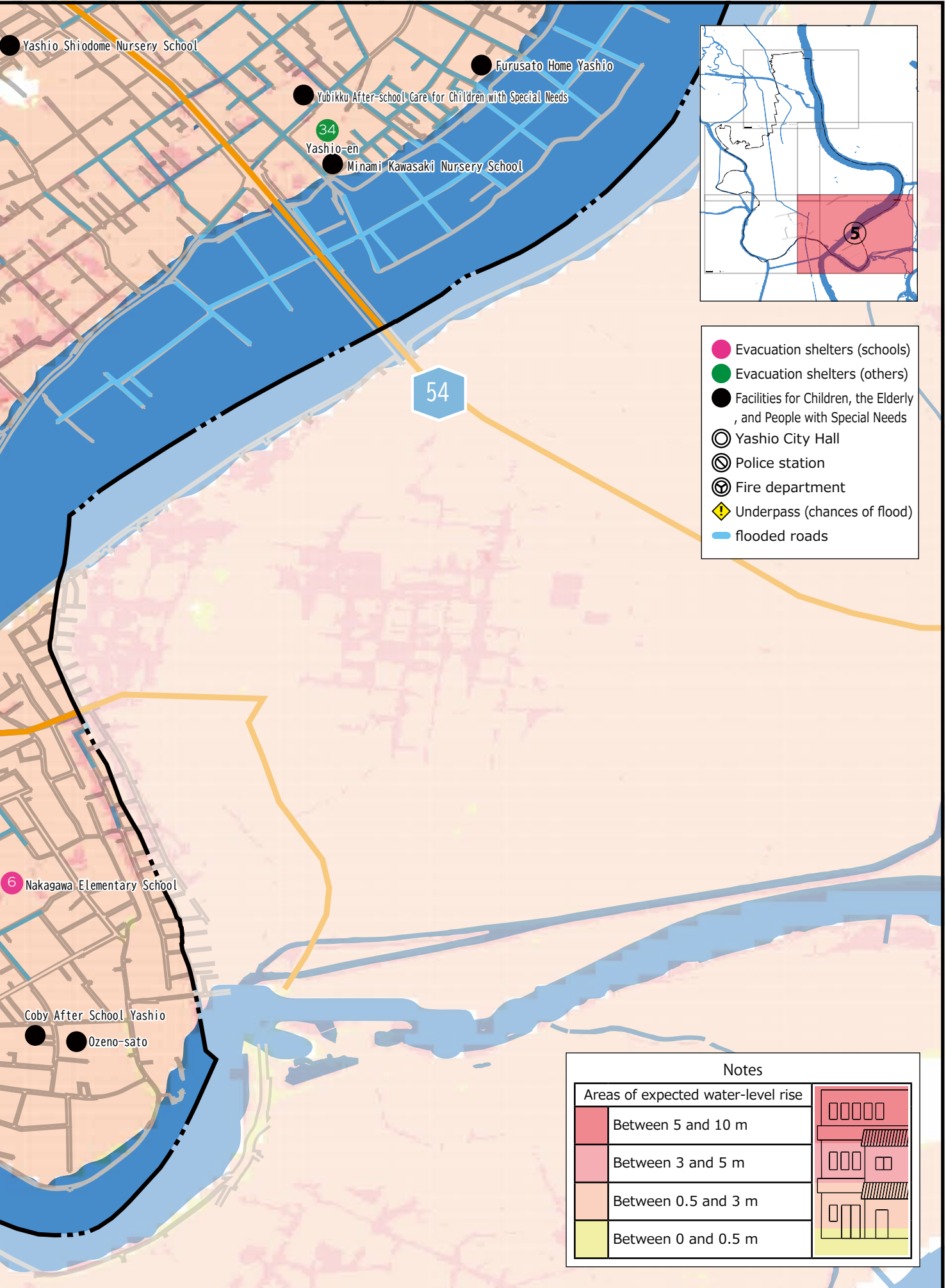
-  Evacuation shelters (schools)
-  Evacuation shelters (others)
-  Facilities for Children, the Elderly, and People with Special Needs
-  Yashio City Hall
-  Police station
-  Fire department
-  Underpass (chances of flood)
-  flooded roads



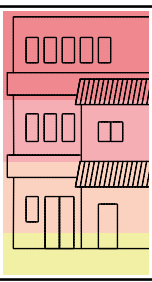


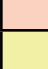
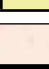


# Detailed Flood Hazards Map(Tonegawa)





- Evacuation shelters (schools)
- Evacuation shelters (others)
- Facilities for Children, the Elderly, and People with Special Needs
- ⊙ Yashio City Hall
- ⊙ Police station
- ⊙ Fire department
- ⚠ Underpass (chances of flood)
- flooded roads

Notes	
Areas of expected water-level rise	
 Between 5 and 10 m	
 Between 3 and 5 m	
 Between 0.5 and 3 m	
 Between 0 and 0.5 m	